

LYNX4MP-500

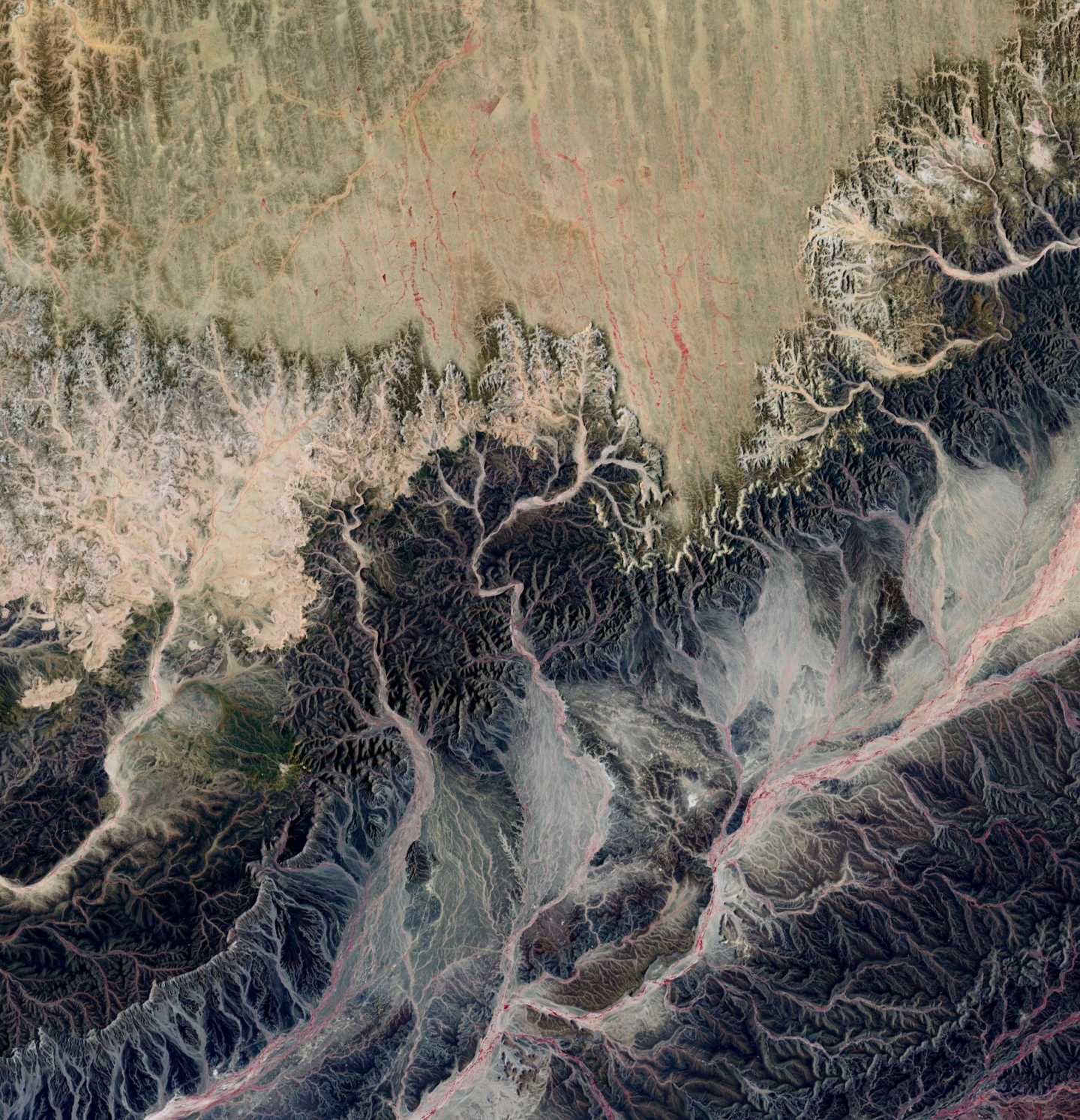
4MP CAMERA FOR SPACE APPLICATIONS

LYNX4MP-500

Lynx4MP-500 is a 4MP RGB/Monochrome camera designed for space applications. Lynx4MP is mechanically compatible with standard CubeSat formfactor and can support precise image capture timing requirements.

Spatial Resolution (GSD):	5m at 500km Orbit
Focal Length:	500 mm
F Number:	5.7
Spectral Range:	450 nm -750 nm
Image Sensor:	CMOS Global Shutter
Spectral Bands:	RGB Bayer
Pixel Resolution:	2048 x 2048
Pixel Size:	5.5 um
Control Interface:	UART
Data Interface:	UART/ SPI/ LVDS
Power Supply	5V DC
Power Consumption:	2.75 W
On-board RAM:	30 full resolution images
On board Flash Memory	800 full resolution images
Dimensions:	100 mm x 100 mm x 200 mm
Weight:	1.5 kg





www.infinityavionics.com
info@infinityavionics.com