



Leo2MP

Space Asset Monitoring Camera

Leo2MP

Leo2MP is a small form factor engineering camera designed for space applications. With both on-board image data storage and image data streaming over USB2 capabilities, the camera is ideal for monitoring spacecraft structures or deployment activities, space manufacturing and robotics as well as rover applications. Leo2MP comes with LED illumination to support challenging space illumination conditions.

Image Sensor:	CMOS RGB – Rolling shutter
Field of View:	90/ 110 degrees
Resolution:	Up to 2MP
Image Encoding:	JPEG
On-board Storage:	200 images
Frames Per Second:	Up to 12 FPS (resolution dependent)
Command and Telemetry Interface:	UART – ASCII commands
Image Data Interface:	UART/ RS485/ USB2 – JPEG encoded image data
LED Luminous Flux:	Up to 150 lm
Power Consumption:	1 W (Without LED illumination) 3 W (With LED illumination)
Size:	46 mm x 46 mm x 22 mm
Operating Temperature:	-20°C to 60°C
Total Ionizing Dose:	Up to 30 kRad

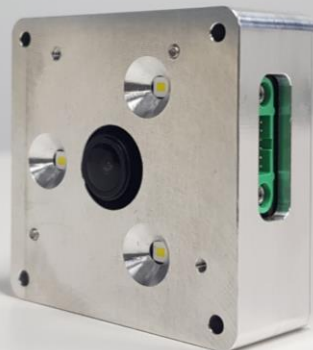




Image Credit: NASA



www.infinityavionics.com
info@infinityavionics.com